

# Determination the Structural Properties of Polystyrene (Cork) Doped by Aluminium Oxide Using the (XRD) Technique

**Tamador Almardi Albashier<sup>1</sup>, Mahmoud Hamid Mahmoud Hilo<sup>1,2</sup>, Abdalsakhi Suliman<sup>3</sup>**

<sup>1</sup>Department of Physics, Faculty of Science, Sudan University of Science and Technology, Khartoum, Sudan

<sup>2</sup>Department of Basic Science, Faculty of Computation, Sudan International University, Khartoum, Sudan

<sup>3</sup>Department of Physics, Faculty of Science, Neilien University, Khartoum, Sudan

## Email address:

mahmoud1972@sustech.edu (M. H. M. Hilo), mahmoudhilo@gmail.com (M. H. M. Hilo), tamador.almardi@gmail.com (T. A. Albashier)

## To cite this article:

Tamador Almardi Albashier, Mahmoud Hamid Mahmoud Hilo, Abdalsakhi Suliman. Determination the Structural Properties of Polystyrene (Cork) Doped by Aluminium Oxide Using the (XRD) Technique. *American Journal of Materials Synthesis and Processing*.

Vol. 6, No. 1, 2021, pp. 10-19. doi: 10.11648/j.ajmsp.20210601.12

**Received:** October 31, 2020; **Accepted:** November 20, 2020; **Published:** March 12, 2021

---

**Abstract:** The X-ray diffraction technique is one of the techniques that are widely and precisely used in determining the structural properties of materials through which materials can be developed and their areas of use increased, and Cork is considered one of the polymers of very low industrial value and is used only for secondary purposes such as packaging, and it is possible to have any other uses of high value by doping the cork with materials that can change its physical properties. Therefore, this study aimed to improve the structural properties of cork (polystyrene) doped by aluminum oxide with doping ratios (0.1,....., 0.9) molar, through X-ray diffraction, where the results showed that all the prepared samples are multi-crystallized of the types (cubic, mono, triple and hexagonal). And it was found that the preferred direction of growth is the level (211), and the crystal size of all the prepared samples was calculated, and it was found that it increases with the increase in the percentage of doping. Also, the density and number of crystals were calculated as each of them decreases with the increase of the doping percentage. This study concluded that cork, through its structural properties and after doping by aluminum oxide, can be of great technological benefit by having properties that are very similar to those of a semiconductor.

**Keywords:** Cork, Polystyrene, Structural Properties, XRD, Aluminum Oxide, Doping

---

## 1. Introduction

The cork tree has a remarkable capacity to create suberose tissue from its inner bark. This tissue, formed specifically by the phylogeny of the cork oak (the tissue responsible for the formation of new cells), derives its name from the Latin super (5cork). The life cycle of the Cork oak produces three qualities of supersize tissue virgin cork, reproduction cork from the second strip-ping; and reproduction cork from subsequent strips [1].

Cork is one of the oldest substances known to mankind, a material that is based like a sponge and its origin is plant and is lightweight, and a insulating material also worse against water, sound, heat and electricity, it does not absorb water easily, and it is also characteristic of cork that it bears high

pressure, and this substance appeared in the centuries BC where the barges were made of them, as well as to float fishing nets being a light material floating on the sea surface, and then used as pipe plugs [2-4]. It does not absorb water easily and can be compressed considerably, but returns to its first state after the pressure has subsided. Since the 4th century B.C., people have used corks and the Romans have worn cork sandals, and they have used cork to float shipyards and fishing nets [5-7]. Cork plugs have been made since the 17th century. The cork is produced after obtaining the outer shell of the cork tree as it contains an outer layer of coarse sand which is brown, and is adjacent to the cork material and attached to the so-called tannic acid, the first step begins with

the skimming of the outer layer, and the crust is placed in boiling water until the material becomes soft and the acid separates from it, after which it is easy to form a whole slab of cork, and the cork differs in quality and density and then is shipped to be used in industry [11].

## 2. Structural Properties

The structural properties are an important method for studying the crystal structure of layers, and this is done through the use of X-ray diffraction. X-ray diffraction analysis is used to know the nature of the crystal structure and the main crystalline phases, and that is to know the oriented direction of the prepared layers under certain conditions, as the general principle of diffraction depends on the phenomenon of interference that occurs when the movement of a wave is dispersed at a number of centers of atoms and as a result, either interference occurs Constructive or destructive interference.

The English scientist (Bragg) assumed a simple pattern of the crystal structure, by means of which he could know the direction of the X-ray diffraction from the crystal after its fall in practice, and this model states that the different levels that are composed of the crystal atoms can reflect the X-rays [9, 10].

$$n\lambda = 2d \sin \theta \quad (1)$$

Where (d): the distance between two successive atomic levels and ( $\theta$ ) the diffraction angle (n) Integer (1, 2, 3...), and  $\lambda$ : the X-ray wavelength

As the reflection of Braque occurs only when the wavelength of the incident X-rays through which it is possible to obtain a reflection from a plane that has coordinates smaller or equal to twice the interface distance between two successive crystals, as shown in the figure below, therefore, visible light cannot be used to study the crystal structure, that is, the Braque condition For reflection is  $\lambda \leq 2d_{hkl}$

Lattice constants: Knowing the compositional factors of a substance that depends on the X-ray diffraction spectrum is important in explaining many of the physical properties of the material. Thus the lattice constant (a) can be calculated using the following equation

$$d_{hkl} = \frac{a}{(h^2 + k^2 + l^2)^{\frac{1}{2}}} \quad (2)$$

Average particle size: The average grain size is calculated using the (Scherer's Formula)

$$D_{av} = \frac{k\lambda}{\beta \cos \theta} \quad (3)$$

Since k: the forming factor equals 0.94

$\lambda$  : The wavelength of the X-ray used

$\theta$  : Bragg diffraction angle

$\beta$  : Full width at half-maximum in (rad) (FWHM)

## 3. Experimental

This part of the work includes a detailed description of the preparation of Aluminum Oxide ( $Al_2O_3$ ), which is used to dope polystyrene (cork) dissolved in Benzene by the method of Sol-Gel method with volumetric ratios (0.1, to 0.9) mol with increasing step of 0.1 at a temperature Chamber by magnetic stirrer to obtain nine samples of doped polystyrene, and then studying the structural and optical properties of the samples by means of X-ray diffraction devices, a UV scale and an infrared device.

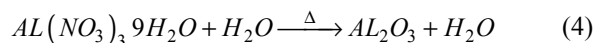
### 3.1. The Sol-Gel Method

The sol-gel system consists of several locally available tools through which polystyrene can be doped, these are:

- 1- Magnetic stirrer and hot plate
- 2- Holders
- 3- Thermometers
- 4- Beakers
- 5- Sensitive balance

### 3.2. Preparation of Aluminum Oxide

For the preparation of Aluminum oxide, aluminum nitrate ( $Al(NO_3)_3 \cdot 9H_2O$ ) was used (as a source of Aluminum oxide, provided by (LOBA CHEMIE) company, with a molecular weight of 375.13 and a concentration of 98%, which is a white powder that is soluble in water, it was prepared at a temperature of (80) degrees Celsius for each Samples with different concentrations ranging from (0.1, 0.2, 0.3, 0.4, 0.5, 0.6, 0.7, 0.8, 0.9) molarity by adding N, N- Dimethylformamide for HPLC and Spectroscopy as an oxidizing agent and precipitant, and through the following equations:



$$W_t = \frac{M_{wt} * V * M_o}{1000} \quad (5)$$

Where

( $M_o$ ) Denotes the molecular concentration

( $W_t$ ) Denotes the solution weight

( $M_{wt}$ ) Denotes the molecular weight

( $V$ ) Denotes the volume of distilled water in (mL)

A (773 mg) was dissolved in (69 mL) of distilled water and placed in the magnetic stirrer at a temperature of 80°C for 60 minutes, to obtain complete dissolution for the first sample, and then dissolve (740 mg) in (66.5 mL) of distilled water and placed in the magnetic stirrer at a temperature of 80°C for 60 minutes to get the second sample. Also, (804 mg) was dissolved in (75 mL) of distilled water and placed in the magnetic stirrer at a temperature of 80 for 60 minutes to get the third sample, (761 mg) was dissolved in (68.5 mL) of distilled water and placed in the magnetic stirrer at a temperature of 80°C for 60 minutes to obtain the fourth sample, then, (801 mg) was dissolved in (70 mL) of distilled

water and placed in a magnetic stirrer at a temperature of 80°C for 60 minutes to obtain the fifth sample, and (845 mg) was dissolved in (79 mL) of distilled water and placed in the magnetic stirrer at a temperature of 80°C for 60 minutes to obtain the sixth sample, (744 mg) was dissolved in (66 mL) of distilled water and placed in a magnetic stirrer at a temperature of 80 for 60 minutes to obtain the seventh sample, and finally a (969 mg) was dissolved in (87 mL) of distilled water and placed in a magnetic stirrer at a temperature of 80°C for 60 minutes to obtain the eighth sample, and (840 mg) was dissolved in (74 mL) of distilled water and placed in a magnetic stirrer at a temperature of 80°C for 60 minutes to obtain the ninth sample.

Meanwhile, ten samples of the synthetic white cork (polystyrene) that was obtained after use (the waste) was dissolved in laboratory Benzene with a weight of 200 grams for each sample to become a solution and ten samples were prepared, to prepare doped cork samples, each of the nine previously prepared samples was added to a sample of 200 grams of cork dissolved in benzene and placed in the magnetic stirrer for 60 minutes to obtain the nine samples of the gelatinous solution of the cork doped by Aluminum oxide, then the solutions were placed in the bakers with the magnetic stirrer for 60 minutes to complete mixing and that to obtain a gelatinous solution. Spread it on glass slides, then leave the samples for 24 hours to dry and ready for testing.

## 4. Results and Discussion

In this part of the paper, first the main comparison with pervious works shows that, Comparing this to the work [12, 13] which intended that the mechanical properties of the Cork is affected by the doping with PTT-g-MA which is the way that the doping by aluminum oxide did in our work, then the main results that have been obtained from the experiments made of polystyrene (cork) doped by aluminum oxide in different rate of molar (0.1, 0.2, 0.3, 0.4, 0.5, 0.6, 0.7, 0.8, 0.9 and 1.0) are presented, the techniques of X-ray diffraction (XRD) was used to identify the precise crystal structure of the samples, where an X-ray was shed on the samples, which would appear according to reflections (Bragg) representing the atoms arranged in a specific direction, and through the data obtained from the tests of the prepared samples, the granular size, lattice constants and density can be calculated, and macroscopic compliance, and the specifications of the X-ray diffraction device that was used at the University of Johannesburg – South Africa are as follows:

Type: XRD- 6000 Shimadzu  
 Target: Cu-K $\alpha$   
 Wave Length: 1.54060  $\text{\AA}$   
 Speed: 5deg/min  
 Current: 30mA  
 Voltage: 40KV

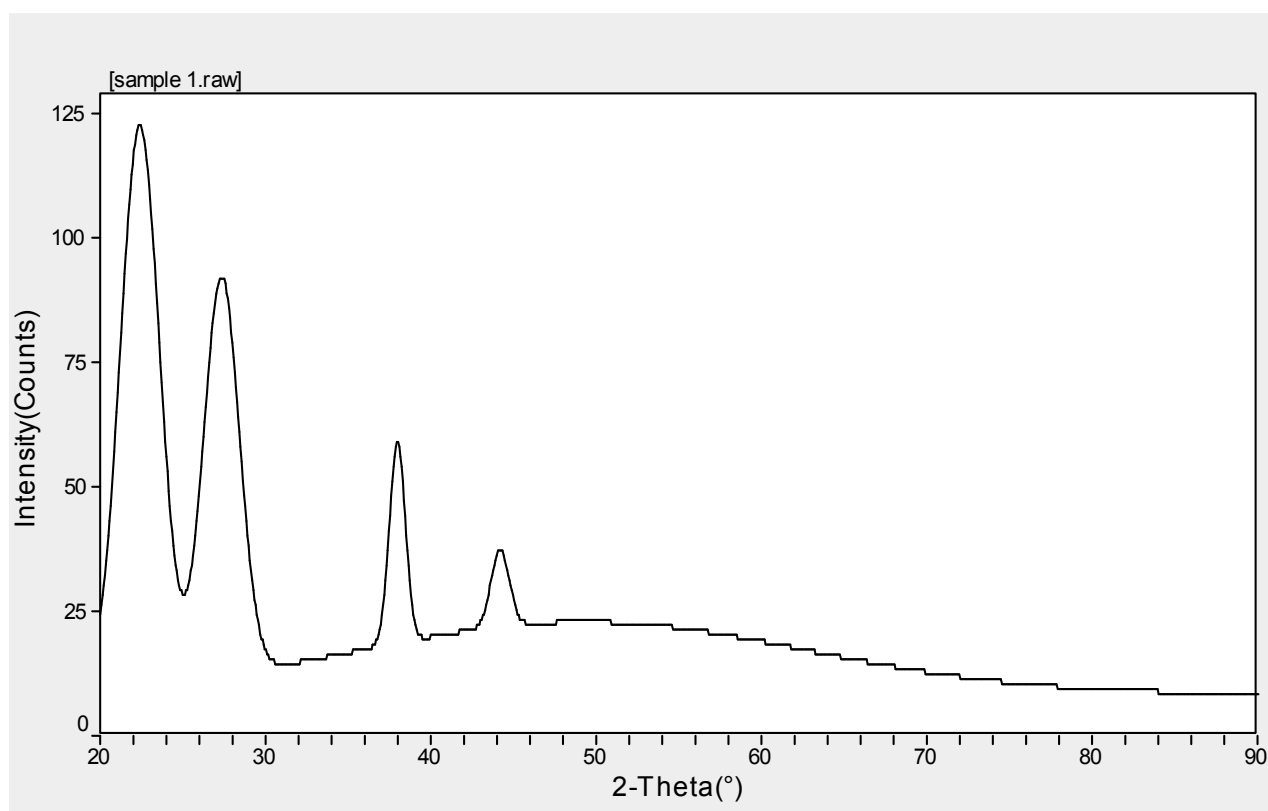


Figure 1. XRD spectrum of sample 1.

**Table 1.** Calculated Lattice Constants from Peak Locations and Miller Indices [Monoclinic] of sample 1.

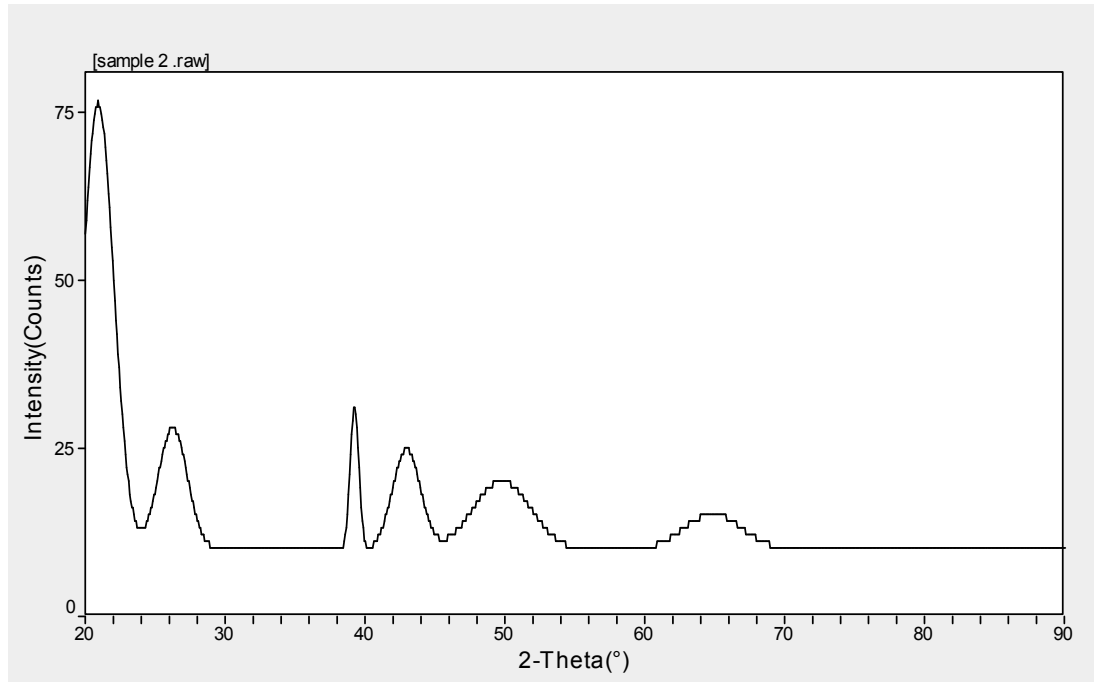
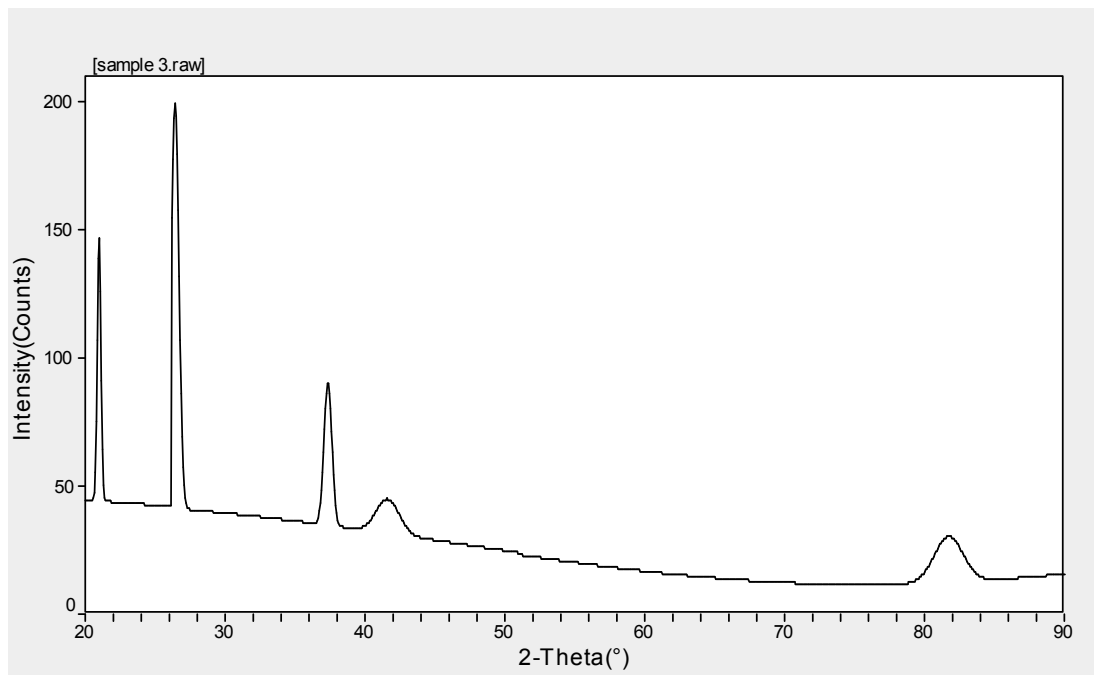
2 $\theta$	d (nm)	H	k	l	X <sub>s</sub> (nm)
22.869	3.8855	3	1	1	6.2
27.781	3.2086	4	1	1	15.2
37.974	2.3675	1	3	0	9.9

Cell Volume = 123.3 ( $\text{\AA}^3$ )  
 $a = 10.277b = 12.66c = 10.629$   
 $\alpha = 90^\circ \beta = 116.82^\circ \gamma = 90^\circ$   
 Density = 7.8117 mg.cm<sup>-3</sup>  
 Crystal Form: Monoclinic – Primitive

**Table 2.** Calculate Lattice Constants from Peak Locations and Miller Indices [Tetragonal] of sample 2.

2 $\theta$	d (nm)	H	k	l	X <sub>s</sub> (nm)
39.21	22.957	1	1	2	14.3

Cell Volume = 126.3 ( $\text{\AA}^3$ )  
 $a = b = 3.842 c = 8.553$   
 $\alpha = \beta = \gamma = 90^\circ$   
 Density = 6.8865 mg.cm<sup>-3</sup>  
 Crystal Form: Tetragonal – I- Center

**Figure 2.** XRD spectrum of sample 2.**Figure 3.** XRD spectrum of sample 3.

**Table 3.** Calculate Lattice Constants from Peak Locations and Miller Indices [Monoclinic] of sample 3.

2 $\theta$	d (nm)	H	k	l	X <sub>s</sub> (nm)
20.972	4.2325	0	0	2	30.2
26.324	3.3828	2	1	1	18.3
37.363	2.4048	3	1	1	14.7

Cell Volume = 492 (Å)<sup>3</sup>  
a= 7.605 b =7.754 c = 8.627  
 $\alpha = 90^\circ \beta = 104.6^\circ \gamma = 90^\circ$   
Density = 5.2817mg.cm<sup>-3</sup>  
Crystal Form: Monoclinic– Primitive

**Table 4.** Calculate Lattice Constants from Peak Locations and Miller Indices [Triclinic] of sample 4.

2 $\theta$	d (nm)	H	k	l	X <sub>s</sub> (nm)
21.14	4.1911	1	1	2	12.6
23.734	3.47458	0	2	3	8.0
38.022	2.3646	1	3	3	12.3

Cell Volume = 540.6(Å)<sup>3</sup>  
a= 6.9804 b =8.7402 c = 10.283  
 $\alpha = 107.702^\circ \beta = 105.269^\circ \gamma = 103.881^\circ$   
Density = 4.997mg.cm<sup>-3</sup>  
Crystal Form: Triclinic – Primitive

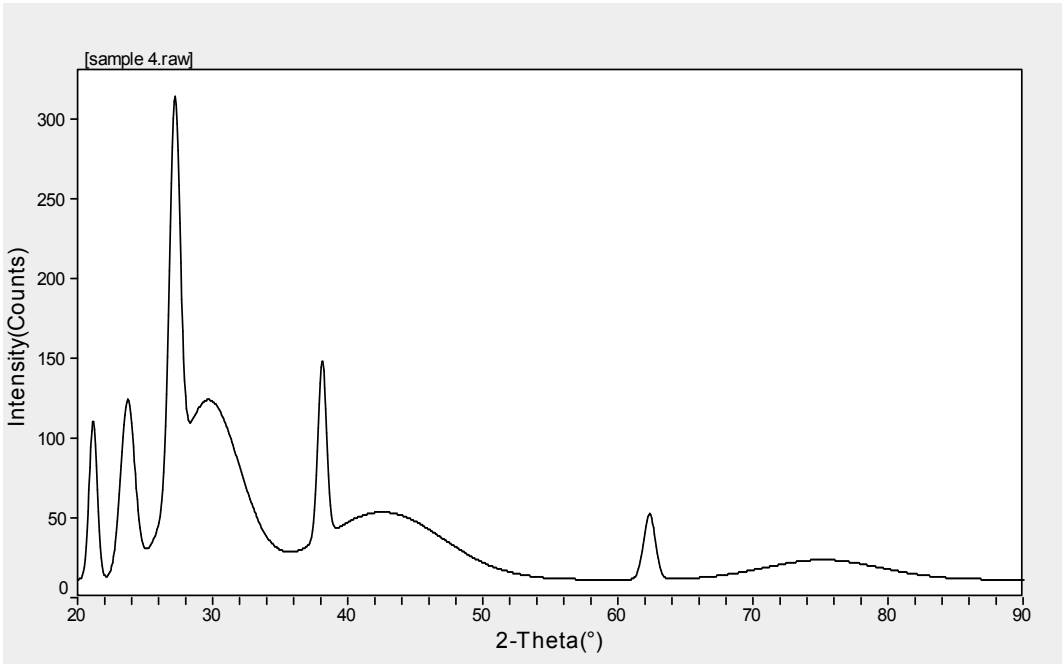


Figure 4. XRD spectrum of sample 4.

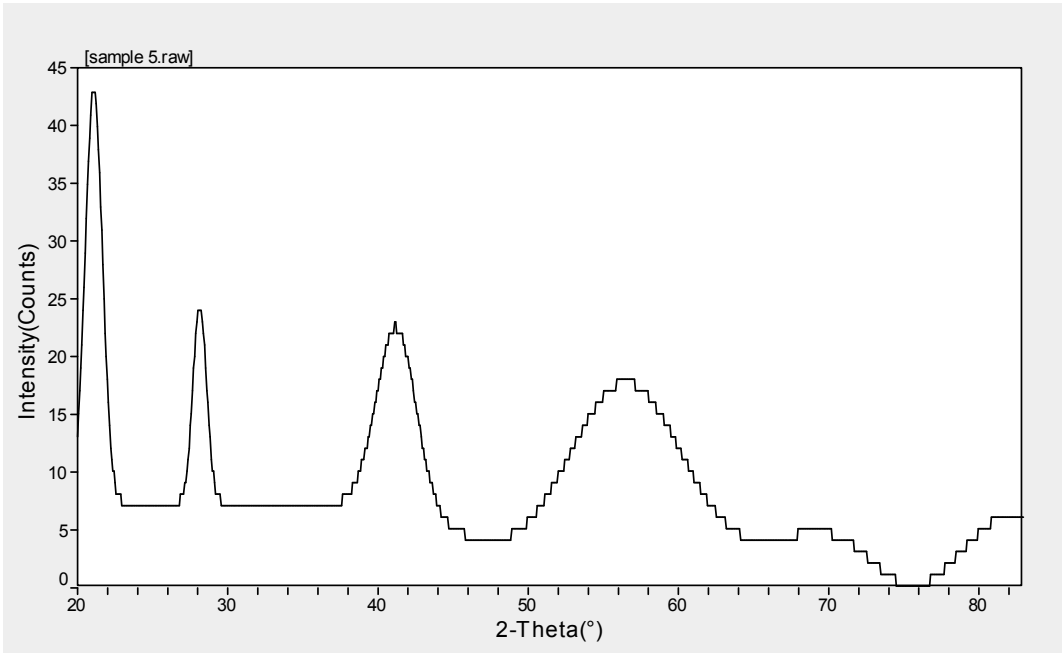


Figure 5. XRD spectrum of sample 5.

**Table 5.** Calculate Lattice Constants from Peak Locations and Miller Indices [Monoclinic] of sample 5.

$2\theta$	$d$ (nm)	$h$	$k$	$l$	$X_s$ (nm)
21.037	4.2194	1	2	1	8.1

Cell Volume =  $1126.2 \text{ (Å)}^3$

$a=7.353$   $b=25.225$   $c=6.097$

$\alpha = 90^\circ$   $\beta = 95.2^\circ$   $\gamma = 90^\circ$

Density =  $4.0653 \text{ mg.cm}^{-3}$

Crystal Form: Monoclinic – Primitive

**Table 6.** Calculate Lattice Constants from Peak Locations and Miller Indices [Hexagonal] of sample 6.

$2\theta$	$d$ (nm)	$h$	$k$	$l$	$X_s$ (nm)
22.321	3.9795	2	1	1	7.7

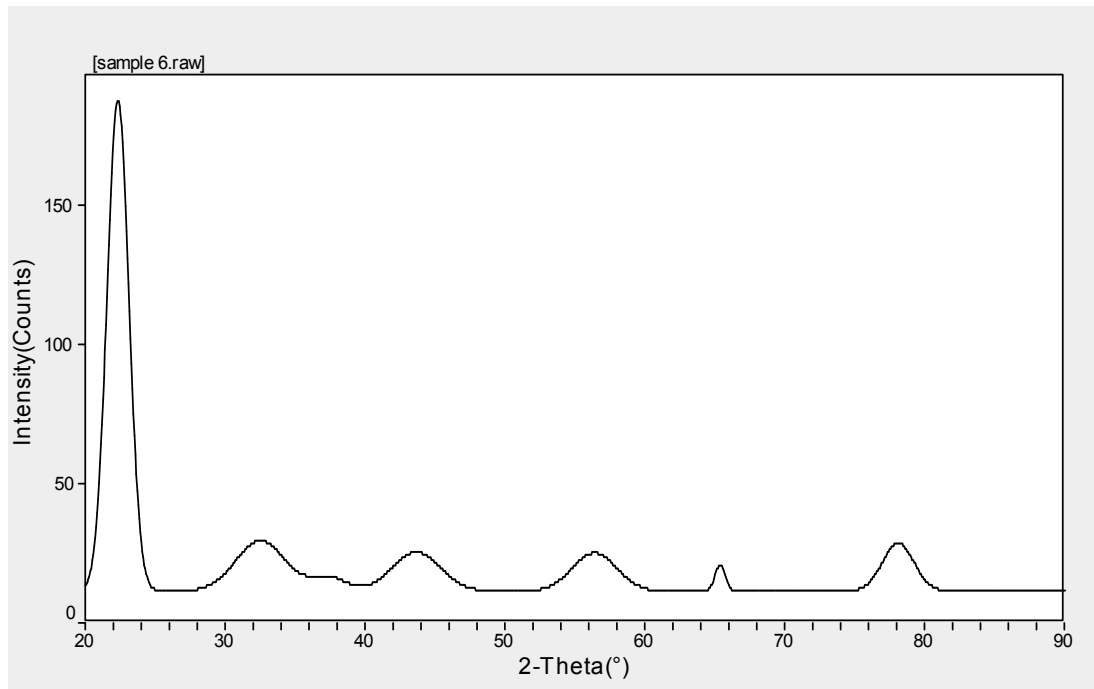
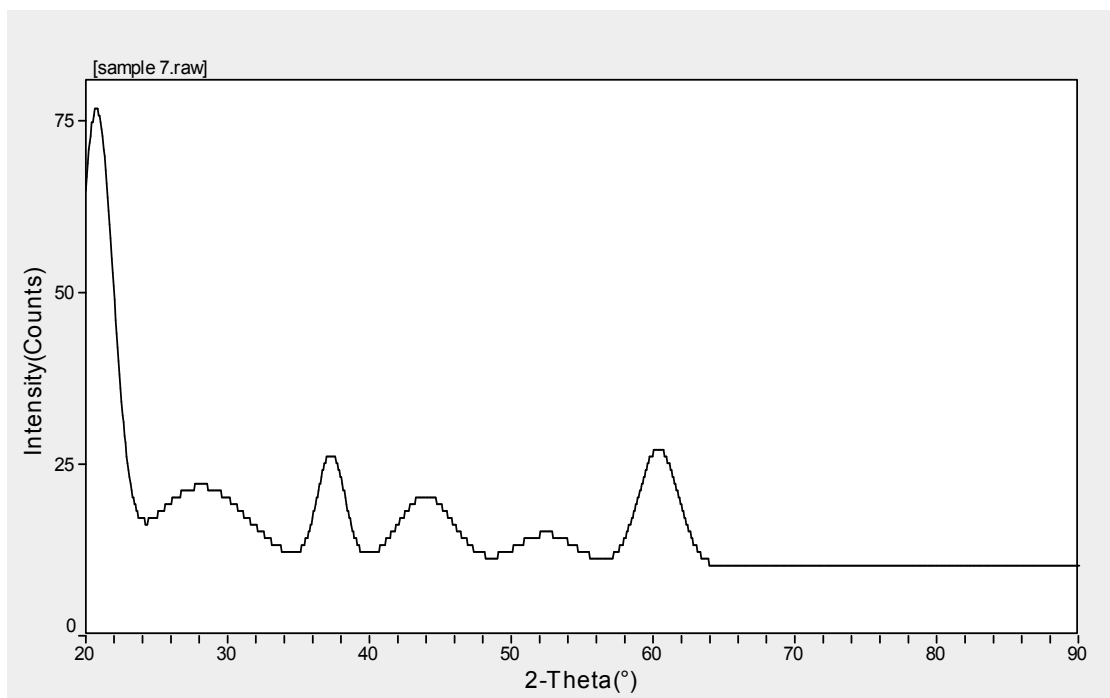
Cell Volume =  $1385.5 \text{ (Å)}^3$

$a=13.74$   $b=13.74$   $c=8.474$

$\alpha = 90^\circ$   $\beta = 90^\circ$   $\gamma = 120^\circ$

Density =  $4.0001 \text{ mg.cm}^{-3}$

Crystal Form: Hexagonal – Primitive

**Figure 6.** XRD spectrum of sample 6.**Figure 7.** XRD spectrum of sample 7.

**Table 7.** Calculate Lattice Constants from Peak Locations and Miller Indices [Hexagonal] of sample 7.

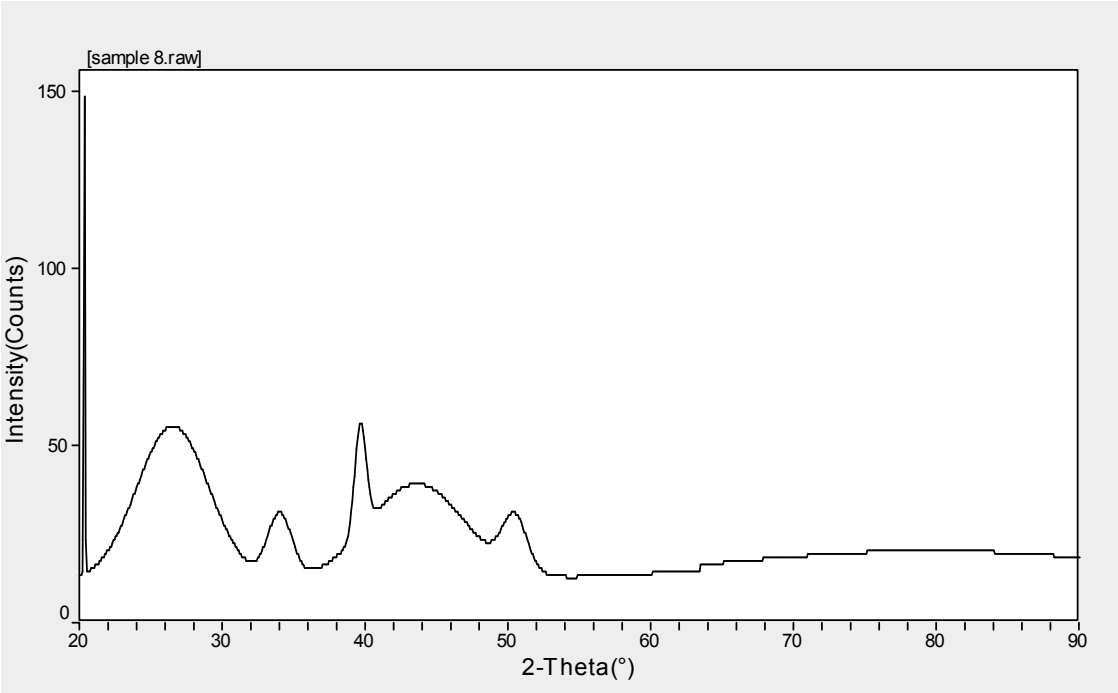
2θ	d ( nm )	H	k	l	X <sub>s</sub> (nm )
22.321	3.9795	2	1	1	7.7

Cell Volume = 1385.5 (Å<sup>3</sup>)  
a= 13.74b = 13.74c = 8.474  
α = 90 °β =90 °γ = 120°  
Density = 4.0001 mg.cm<sup>-3</sup>  
Crystal Form: Hexagonal – Primitive

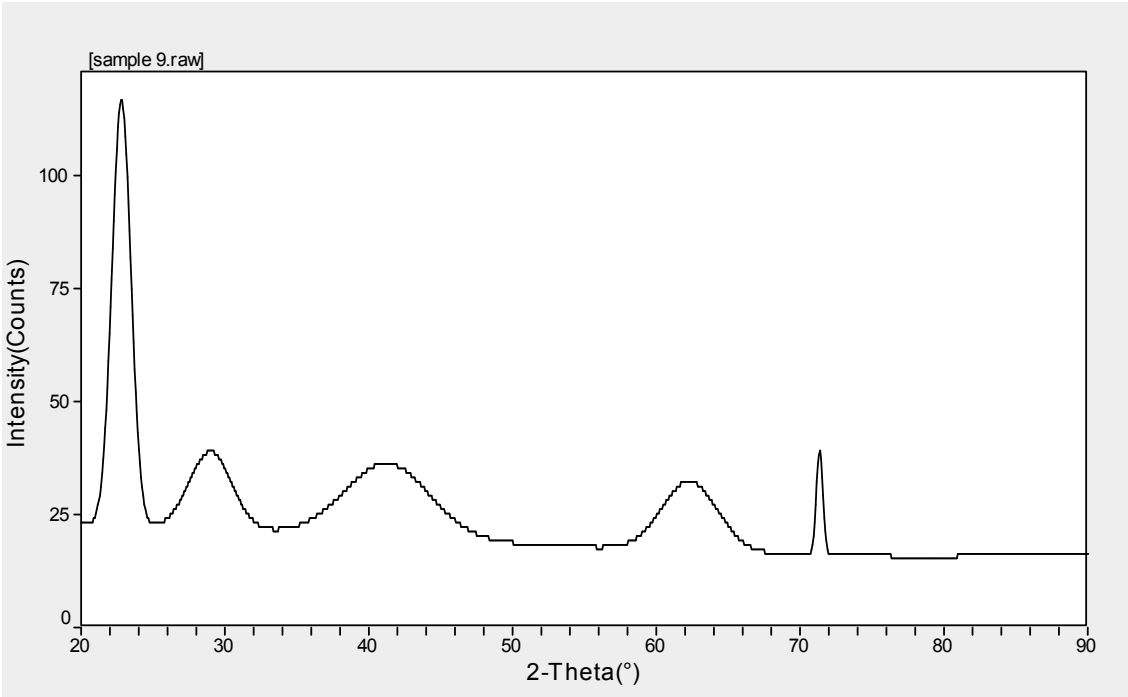
**Table 8.** Calculate Lattice Constants from Peak Locations and Miller Indices [Orthorhombic] of sample 8.

2θ	d ( nm )	H	k	l	X <sub>s</sub> (nm )
39.65	2.2713	0	2	3	12.9

Cell Volume = 613.4(Å<sup>3</sup>)  
a=5.9436b =14.433c = 7.1508  
α = 90 °β =90 °γ = 90°  
Density = 3.5508mg.cm<sup>-3</sup>  
Crystal Form: Orthorhombic – C-Center



**Figure 8.** XRD spectrum of sample 8.



**Figure 9.** XRD spectrum of sample 9.

**Table 9.** Calculate Lattice Constants from Peak Locations and Miller Indices [Monoclinic] of sample 9.

2 $\theta$	d ( nm )	H	k	l	X <sub>s</sub> (nm )
22.764	3.9031	2	2	2	6.4
73.44	1.3208	1	5	0	20

Cell Volume = 22594.9 (Å<sup>3</sup>)

a= 14.044b= 13.812c= 13.382

$\alpha = 90^\circ \beta = 91.48^\circ \gamma = 90^\circ$  Density = 2.3003 mg.cm<sup>-3</sup>

Crystal Form: Monoclinic – Primitive

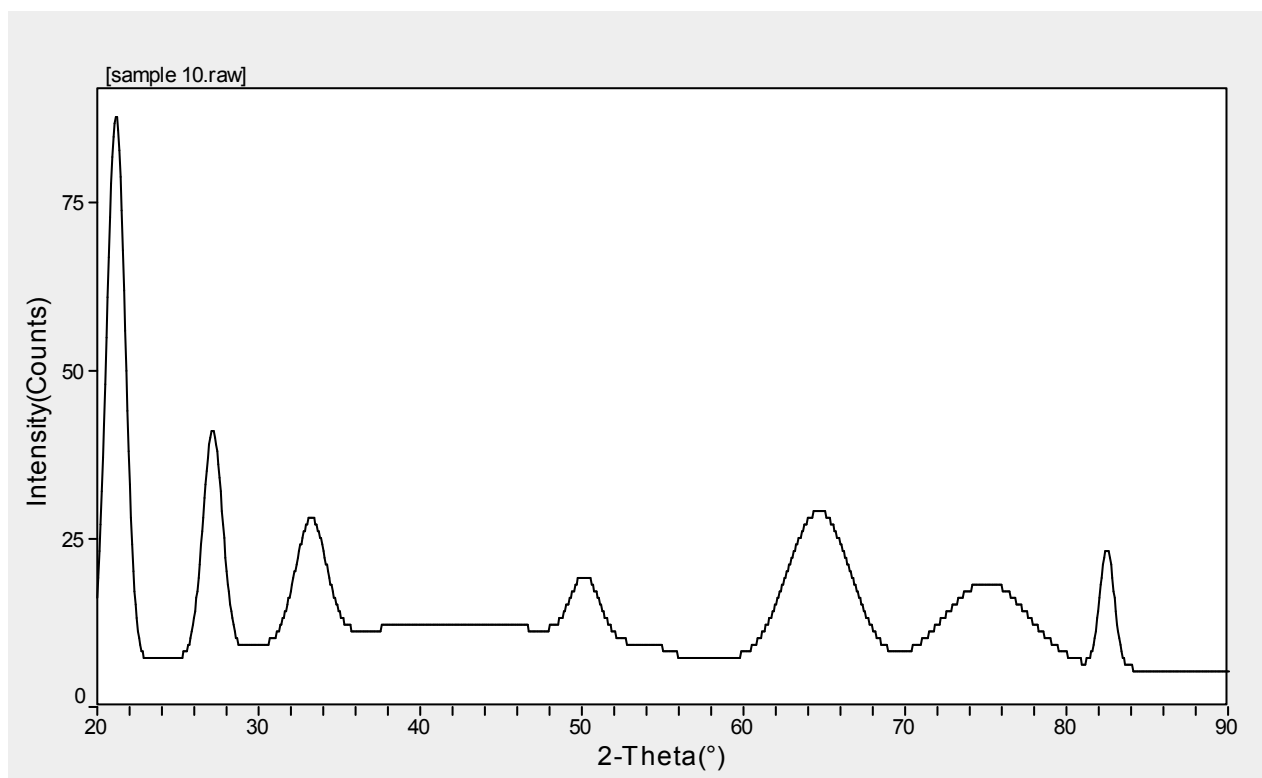
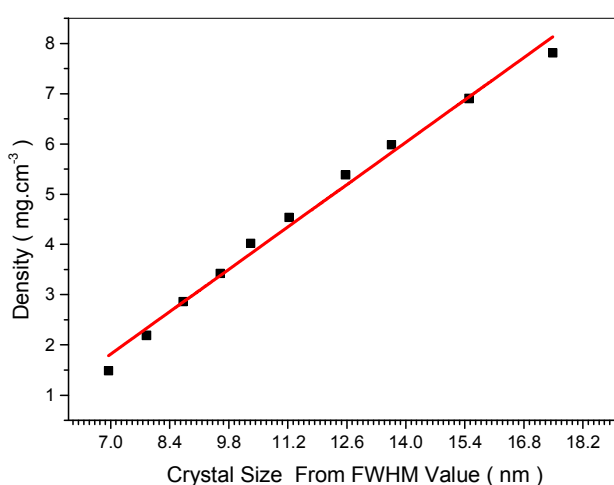
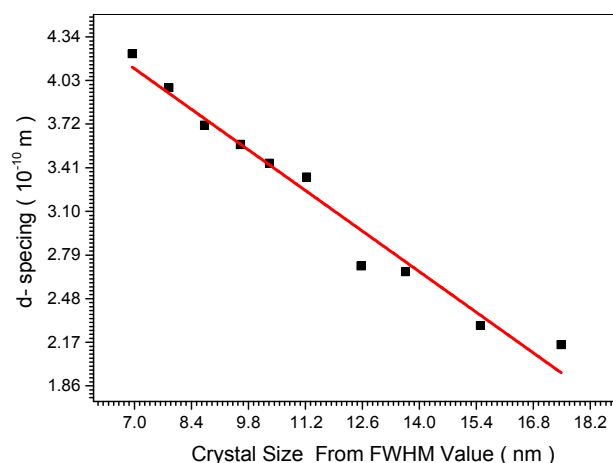
**Table 10.** Calculate Lattice Constants from Peak Locations and Miller Indices [Monoclinic] of sample 10.

2 $\theta$	d ( nm )	H	k	l	X <sub>s</sub> (nm )
21.295	4.1689	0	2	0	7.6
27.358	3.2572	2	1	1	6.3

Cell Volume = 492.5 (Å<sup>3</sup>) a=11.045b=8.193c= 5.535

$\alpha = 90^\circ \beta = 100.5^\circ \gamma = 90^\circ$  Density = 1.4873 mg.cm<sup>-3</sup>

Crystal Form: Monoclinic – Primitive

**Figure 10.** XRD spectrum of sample 10.**Figure 11.** Relation sheep between Crystal size and density of polystyrene (cork) doping by aluminum oxide in different rate of molar (0.1, 0.2, 0.3, 0.4, 0.5, 0.6, 0.7, 0.8, 0.9 and 1.0) Molar samples**Figure 12.** Relation sheep between Crystal size and d- spacing of polystyrene (cork) doping by aluminum oxide in different rate of molar (0.1, 0.2, 0.3, 0.4, 0.5, 0.6, 0.7, 0.8, 0.9 and 1.0) Molar samples.



**Table 11.** Some crystallite lattice parameter (*c*-form, density, *X<sub>s</sub>* (nm) and *d* – spacing) of polystyrene (cork) doping by aluminum oxide samples.

No	Crystal Form	Density (mg.cm <sup>-3</sup> )	Cell Volume (Å <sup>3</sup> )	<i>d</i> ( nm )	<i>X<sub>s</sub></i> (nm)
1	Monoclinic-Primitive	7.8117	123.3	2.15386	17.483
2	Tetragonal-I- Center	6.90469	126.3	2.29	15.501
3	Monoclinic- Primitive	5.9817	492	2.6713	13.66
4	Triclinic – Primitive	5.38433	540.6	2.7119	12.57
5	Monoclinic- Primitive	4.53865	1126.2	3.343	11.23
6	Hexagonal- Primitive	4.01859	1385.5	3.443	10.32
7	Hexagonal- Primitive	3.42123	1385.5	3.575	9.599
8	Orthorhombic-C-Center	2.86369	613.4	3.713	8.72
9	Monoclinic- Primitive	2.18902	22594.9	3.9795	7.85
10	Monoclinic- Primitive	1.4873	492.5	4.2194	6.95

The crystal structure of all samples characterized at room temperature using a Philips PW1700 X-ray diffractometer (operated at 40 kV and current of 30 mA) and samples were scanned between 20° and 90° at a scanning speed of 0.06°C/s using Cu K $\alpha$  radiation with  $\lambda = 1.5418\text{\AA}$ . The representative XRD charts of all polystyrene (cork) doped by aluminum oxide in different rate of molar (0.1, 0.2, 0.3, 0.4, 0.5, 0.6, 0.7, 0.8, 0.9 and 1.0) as show in Figure 1 to Figure 12. Miller indices provided in the figure and all peaks determine transformation of polystyrene (cork) doped by aluminum oxide in different rate of molar crystallites with tetragonal retilite crystal structure. Table 1 to table 11 shows the XRD parameters of polystyrene (cork) doped by aluminum oxide at various crystalline orientations. Figure 11 describes the relation between the Crystal size of polystyrene (cork) doped by aluminum oxide samples and density of samples, it showed that increasing the density of samples increases the Crystal size samples at rate 0.60234 mg. Cm-3/nm. The dislocation density ( $\delta$ ) and number of unit cells (*n*) of polystyrene (cork) doped by aluminum oxide in different rate of molar is calculated and listed in table 11. Dislocation density decreases by number of unit cells by increasing growth, and decreasing the defects in crystallites. Finally, Figure 12 describes the relation between the Crystal size of polystyrene (cork) doped by aluminum oxide samples and *d*- spacing of polystyrene (cork) doped by aluminum oxide in different rate of molar, and noticed that the rate of decreasing in the *d*- spacing of polystyrene (cork) doped by aluminum oxide samples with increases the Crystal size is equal to  $0.2061 \times 10^{-10} \text{ m / nm}$ .

## 5. Conclusion

This study concluded that cork as a material of industrial low value can be transformed into a material of effective industrial value by doping it with aluminum oxide and studying its structural properties, so as to improve its structural, electrical, and conducting properties. And since it is considered a cheap industrial and commercial waste and can be obtained easily, and its abundance and development of its properties could make it a good alternative in the industry to some rare and unavailable semiconductors. It can be a good addition in the field of industry of electronic devices such as diodes, transistors and integrated circuits, as well as the possibility of using it in solar cells.

## 6. Recommendations

1. Conducting the same study taking into account the change in the measurement of the thickness of samples in the nano scale boundaries by a fixed amount and noting the extent of this effect.
2. Conduct the same study, taking into account the determination of the amount of solvent (benzene) for the cork material, and it shall be fixed for all samples.
3. Study the possibility of deforming the cork with a material other than metal oxides and knowing the extent of this effect on the structural properties.

## References

- [1] A. Barberis; S. Dettori and M. R. Filiggheddu: J. Arid Environ., 2003, 54, 565–569.
- [2] C. Fialho, F. Lopes and H. Pereira: For. Ecol. Manage., 2001, 141, 251–258.
- [3] M. I. d. F. Carrasquinho: Boletim do Instituto dos Produtos Florestais – Cortic,a, 1987, 583, 17–18.
- [4] H. Pereira, M. E. Rosa and M. A. Fortes: IAWA Bull., 1987, 8 (3), 213–217.
- [5] A. Costa, H. Pereira and A. Oliveira: For. Ecol. Manage., 2003, 175, 239–246.
- [6] M. Maa<sup>^</sup> taoui, H. Espagnac and N. Michaux-Ferriere: Ann. Bot., 1990, 66, 183–190.
- [7] S. Ben, “Solid State Electronic Devices”, Hall International, Inc., U.S.A., (1990).
- [8] M. Fox, "Optical Properties Of Solide", Oxford University Press Inc, New York, (2001).
- [9] Y. N. Al-Jammal, "Solid State Physics", Al-Mousal University Press, Arabic Version, (1990).
- [10] B. E. Warren, "X-RAY diffraction" Published by Courier Dover, (1990).
- [11] Sura N. T., "Study The Structural, optical and electrical properties of Indiumdoped Tin oxide thin films deposited by the rmalevaporation", M.Sc. Thesis, kufa University, (2017).

- [12] Natalia Ferreira Braga (2020), et al, 'Effect of Carbon Nanotubes (CNT) Functionalization and Maleic Anhydride-Grafted Poly (trim ethyleneterephthalate) (PTT-g-MA) on the Preparation of Antistatic Packages of PTT/CNT Nanocomposites', Federal University of São Paulo (UNIFESP), 330 Talim, São José dos Campos SP 12231-280, Brazil.
- [13] Senthilkumar S, Rajendran A. Synthesis, characterization and electrical properties of nano metal and metal-oxide doped with conducting polymer composites by in-situ chemical polymerization. *MOJ Poly Sci.* 2017; 1 (6): 192-195. DOI: 10.15406/mojps.2017.01.00031.